

Pracovní list

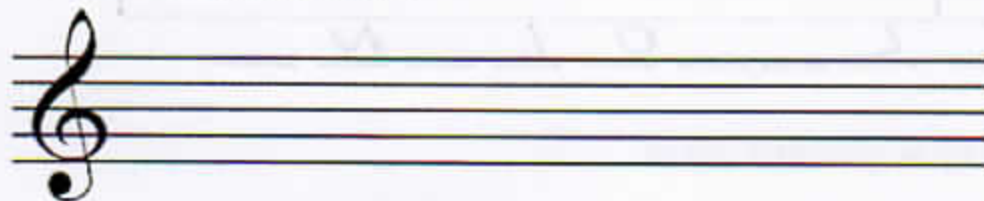
Noty d<sup>2</sup>, e<sup>2</sup>, f<sup>2</sup>, g<sup>2</sup>



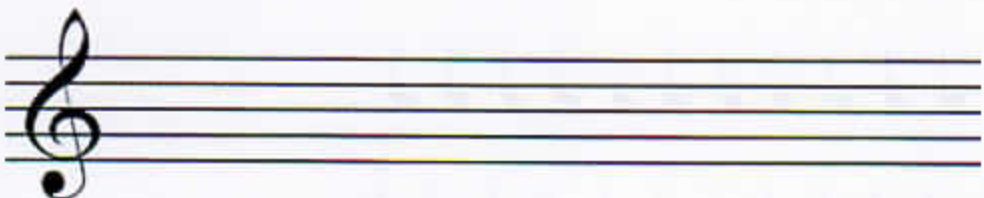
Do notové osnovy napiš noty d<sup>2</sup>



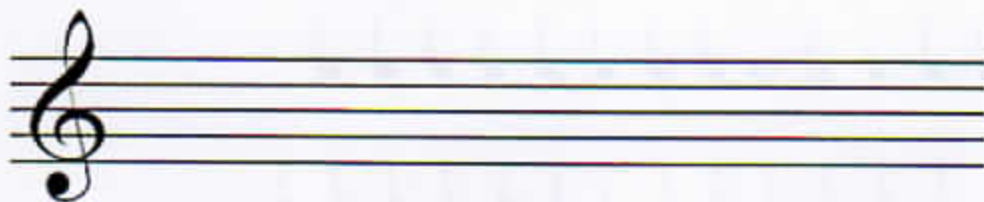
Do notové osnovy napiš noty e<sup>2</sup>



Do notové osnovy napiš noty f<sup>2</sup>



Do notové osnovy napiš noty g<sup>2</sup>



Oprav chyby



otoč →

Vylušti slova

Three musical staves, each with a treble clef and a key signature of one flat (B-flat). The first staff contains a half note on G4, a half note on Bb4, and a whole note on D5. Below the staff are the letters O, R, T, K. The second staff contains a half note on G4, a half note on Bb4, a half note on D5, a half note on F5, a half note on A5, and a half note on C6. Below the staff are the letters R, L, N, I. The third staff contains a half note on G4, a half note on Bb4, a half note on D5, a half note on F5, a half note on A5, and a half note on C6. Below the staff are the letters L, L, O, L, N.

Doplň chybějící taktové čáry do rytmických cvičení

Five musical staves, each with a treble clef and a key signature of one flat (B-flat). The first staff is in 4/4 time and contains a sequence of notes: quarter, quarter, quarter, quarter, half, quarter, quarter, quarter, quarter, half, quarter, quarter, quarter. The second staff is in 3/4 time and contains a sequence of notes: quarter, quarter, quarter, quarter, quarter, quarter, quarter, quarter, quarter, quarter, quarter, quarter, quarter. The third staff is in 2/4 time and contains a sequence of notes: quarter, quarter, quarter, quarter, quarter, quarter, quarter, quarter, quarter, quarter, quarter, quarter, quarter. The fourth staff is in 4/4 time and contains a sequence of notes: half, quarter, quarter, quarter, quarter, quarter, quarter, quarter, quarter, quarter, quarter, quarter, quarter. The fifth staff is in 3/4 time and contains a sequence of notes: quarter, quarter, quarter, quarter, quarter, quarter, quarter, quarter, quarter, quarter, quarter, quarter, quarter.

Spočítej hudební příklady:

Four mathematical problems involving musical notes. The first problem shows a quarter note plus a quarter note equals a dotted line. The second problem shows a quarter note plus a quarter note plus a quarter note equals a dotted line. The third problem shows a half note plus a quarter note equals a dotted line. The fourth problem shows a half note plus a quarter note plus a quarter note equals a dotted line.